

Flap cover

Nominal size 100 to 2000 mm, for round and rectangular openings, for dowelling on a concrete wall or for flange connection

Flap covers are used as a backflow preventer in rain storage reservoirs or for flood protection purposes. The flap cover opens soon in case of small inside pressure and close reliable in case of pressure on the cover. The cover has a reinforced design for pressure up to 6 m wc on the cover. The EPDM sealing

is wastewater, frost and aging resistant. Flap covers are available in round, rectangular and square design. For mounting onto the wall all necessary dowels are included. On request flap covers are also available for embedding into concrete, for flange connection or for mounting on a tube's end.



Materials

Frame: Stainless steel SS304 or SS316Ti
 Flap: Stainless steel SS304 or SS316Ti or St.37 hdg.
 Chem. anchor bolts: Stainless steel S32304
 Sealing: EPDM, wastewater resistant or NBR
Other materials available on request.

Sealing performance

- Leakage rate better than DIN 19569-4
- Excellent sealing performance
- Wastewater resistant sealing material
- Up to 6 m wc pressure (higher pressure possible)

Operational benefits

- Durable operating reliability

Corrosion resistance

- Maximum corrosion resistance due to stainless steel material, all acid cleaned and passivated in own pickling plant

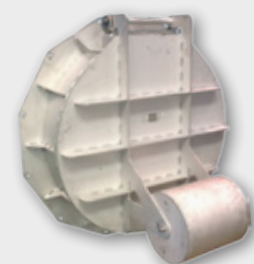
Versions

Each version is available with different cover designs:

- Flat cover for using in case of outer water level under the pipe's bottom
- Flat cover with counterweight for using with small drainage pressure
- Flap cover with counterweight available

Areas of Application

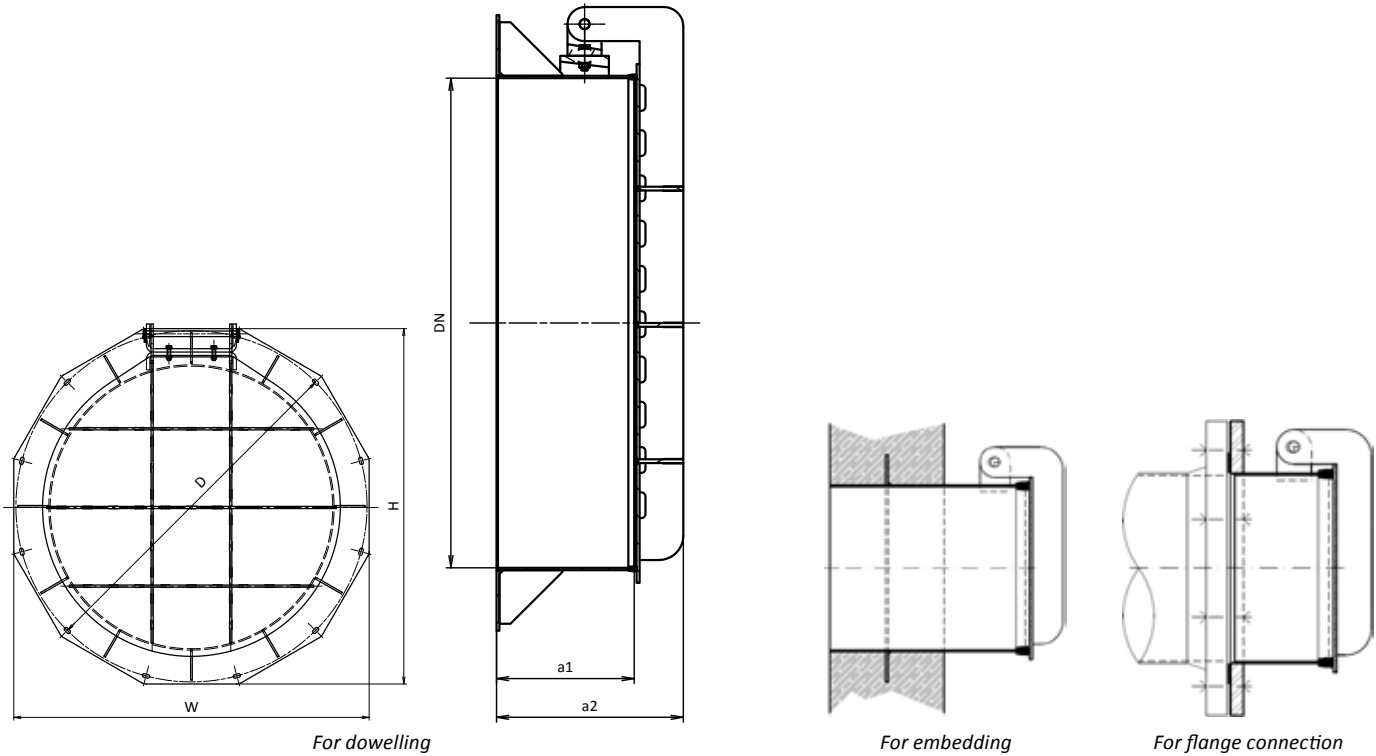
- Municipal and industrial wastewater treatment plants
- Rain reservoirs
- Flood protection



Flap cover DN 1200 with counterweight

Flap cover

Nominal size 100 to 2000 mm, for round and rectangular openings, for dowelling on a concrete wall or for flange connection



Flap cover (for dowelling)								
Diameter (DN)	W	H	a1	a2	D Ø	Dowels	Mounting holes	
80	180	180	72	101	200	M10 × 130	4	
100	220	220	72	101	260	M10 × 130	4	
125	240	240	72	101	290	M10 × 130	4	
150	275	275	77	116	315	M10 × 130	4	
200	325	325	77	116	375	M10 × 130	4	
250	380	380	92	138	435	M10 × 130	4	
300	475	475	153	213	460	M10 × 130	8	
400	550	550	152	212	540	M10 × 130	8	
500	750	750	155	215	740	M10 × 130	8	
600	850	850	155	215	840	M10 × 130	8	
700	950	950	212	292	940	M10 × 130	8	
800	1050	1050	212	292	1040	M10 × 130	8	
900	1200	1200	283	384	1175	M10 × 130	12	
1000	1265	1265	283	384	1250	M10 × 130	12	
1200	1500	1500	283	384	1490	M10 × 130	12	

All dimension in mm. Dimensions and weights for flap covers over DN 1200 on request.

All details are recommended values and can differ depending on pressure rate, kind of mounting and available space.



BÜSCH Technology GmbH

Neuburger Straße 26
 90451 Nürnberg, Germany
 E-Mail info@buesch.com
 Tel. +49 (911) 46 254-0
 Fax +49 (911) 46 254-70