



## Bevel gearbox

made of stainless steel

Product description	F10	F14	
<b>Type of gearbox</b>	Bevel gearbox/Angular gear		
<b>Mounting position</b>	any position		
<b>Temperature range</b>	-40° to +80° C		
<b>Degree of protection of enclosure</b>	IP68++ up to 8 m water column (permanently waterproof)		
<b>Corrosion protection</b>	Housing: 1.4404 (316L)	Housing: 1.4404 (316L)	
	Hollow shaft: 1.4301 (304)	Hollow shaft: 1.4057 (431)	
	Drive shaft: 1.4057 (431)	Drive shaft: 1.4057 (431)	
<b>Direction of rotation</b>	Clockwise rotation at the input shaft results in clockwise rotation at the output		
<b>Model</b>	For rising or non-rising spindle		
<b>Covering</b>	Standard: powder-coated, ATEX: Housing uncoated, cover A4	Standard: powder-coated, optional: uncoated	
<b>Colour</b>	BÜSCH orange (RAL 2004)		
<b>Weight</b>	9.8 kg	21.5 kg	
<b>Connection input</b>	F10 according to EN ISO 5210 suitable for motor and manual actuation by handwheel/crank	F10/F14 according to EN ISO 5210	
	Standard cylindrical Ø 20 mm with fitting key according to DIN 6885.1	Standard cylindrical Ø 30 mm with fitting key according to DIN 6885.1	
<b>Connection output</b>	B1	B1 (Ø 42 mm, with fitting key 12 mm) standard	B1 (Ø 60 mm, with fitting key 18 mm) standard
	Bx	Connector with square 25.7 mm	
	Form A	For screw socket Ø max. 40 mm, for axial force max. 70 kN	For screw socket Ø max. 60 mm, for axial force max. 160 kN
	Further connections and sockets available on request		
<b>Reduction gear ratio</b>	i = 1:1 or 2:1	i = 2:1, i = 2,8:1 or i = 4:1	



Bevel gearbox F10 with shaft connection



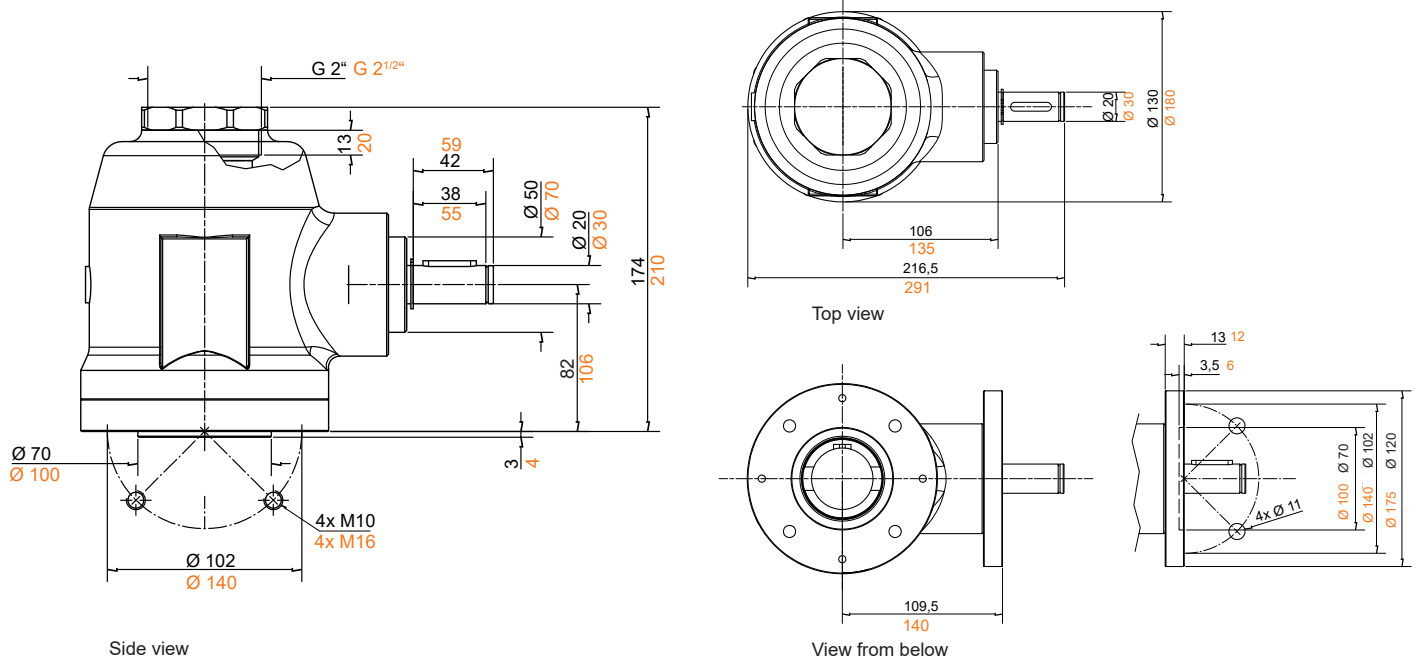
Bevel gearbox F10 with e-actuator driving flange

### YOUR ADVANTAGES

- Rustproof - made of stainless steel
- Durable
- Maintenance free
- Waterproof
- Suitable for drinking water
- In combination with our output type a permanently submersible

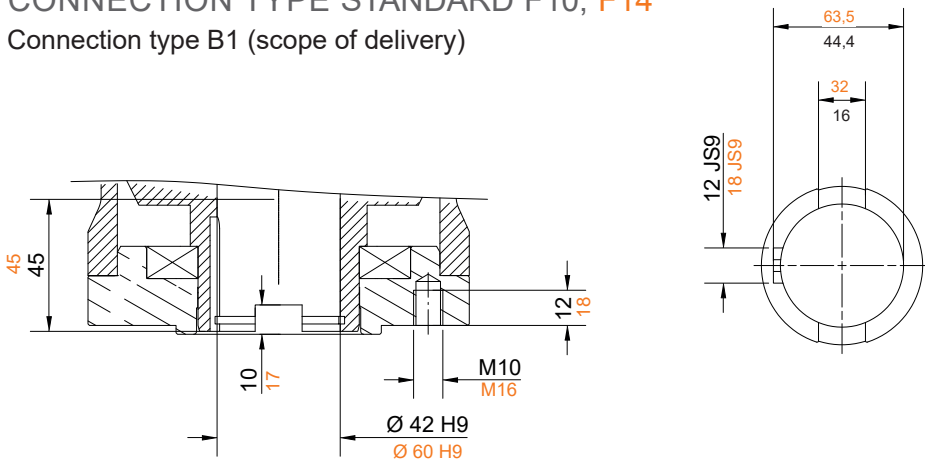
Penstock connection	Driving torque		Reduction gear ratio	Input torque		Factor	Hand wheel Ø max.	Fitting AUMA gear	Weight allowance at gear max. kg
	Nominal moment max. Nm	Norm max. Nm		Nominal moment max. Nm	Norm moment max. Nm				
F10	120	60	1:1	134	66	0,9	300	SA (R) 10.2/ SA (R) 14.2	40/80
			2:1	67	33	1,8	200	SA (R) 7.5/ SA (R) 10.2	40
F14	250	120	2:1	139	66	1,8	300	SA (R) 10.2/ SA (R) 14.2	40/80
			2,8:1	100	48	2,5	300	SA (R) 10.2	40
			4:1	69	33	3,6	200	SA (R) 10.2	40
			2:1	277	111	1,8	400	SA (R) 14.2	80
	500	200	2,8:1	198	80	2,5	400	SA (R) 14.2	80
			4:1	139	55	3,6	300	SA (R) 10.2/ SA (R) 14.2	40/80
			2:1	500	222	1,8	500	SA (R) 14.6	80
			2,8:1	398	160	2,5	500	SA (R) 14.6	80
1000	400	4:1	278	111	3,6	500	SA (R) 14.6	80	

# EXTERNAL DIMENSIONS F10, F14



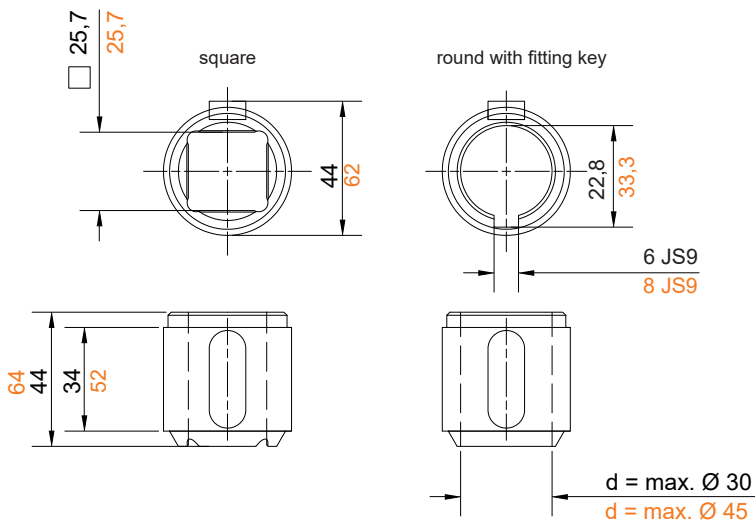
## CONNECTION TYPE STANDARD F10, F14

Connection type B1 (scope of delivery)



## CONNECTION TYPES ACCESSORIES F10, F14

Connection type B3 sockets



Connection type A suitable for axial forces

