



## Stop logs

made of stainless steel or aluminium

### STOP LOG LOCK FOR BLOCKING BUILDING OPENINGS ON 3 SIDES

#### Logs

- Stop log with intermediate seal, straight channel profile in the bottom
- Design of the material thickness of frame and log according to static requirements - including 2 pressure devices for each frame (at least 100 mm above the last log)
- Including officially approved fastening material made of stainless steel

#### Tightness class

- Tightness better than DIN EN 19569, Part 4, Table 1:
- Pressure on the front or back side  $0,3$  to  $1,0 \text{ l} \cdot \text{s}^{-1} \cdot \text{m}^{-1}$  (Tightness class 1)

#### Frame

- 3-sided, u-shaped frame with already mounted seals with base plate
- Alternatively: frame without base plate for direct sealing on the channel base

#### Material logs

- Stainless steel 1.4301 (304) / 1.4404 (316L) / 1.4410 (507) / 1.4462 (318LN) / 1.4539 (904L) / aluminium EN AW-6063 T6 SQ

#### Material frame

- Stainless steel 1.4301 (304) / 1.4404 (316L) / 1.4410 (507) / 1.4462 (318LN) / 1.4539 (904L)

#### Dimensions stainless steel profiles

- B x H 90 mm x 250 mm (minimum size)
- Other heights according to individual production on request

#### Dimensions aluminium profiles

- B x H 50 mm x 300 mm
- B x H 90 mm x 150 mm or with additional reinforcement according to static requirements
- B x H 150 mm x 225 mm

#### Material sealing

- EPDM / EPDM with WRAS approval / NBR

#### Frame fastenings

- Concreting in a building recess
- Dowels in a channel
- Dowels in front of a building opening

#### Mounting

- Pressing device

#### Optional accessories

- Manual or semi-automatic extraction tool
- Cover plate for guide rails - U-profiles can be closed flush with the wall
- Theft protection
- Stop log storage systems (see corresponding BÜSCH data sheet)



Stop log for concreting in front of a building opening



Stop logs 4200 x 2600 mm „Wöhrder See“, Germany

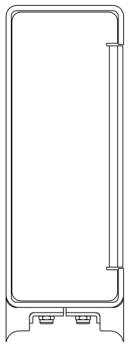


### YOUR ADVANTAGES

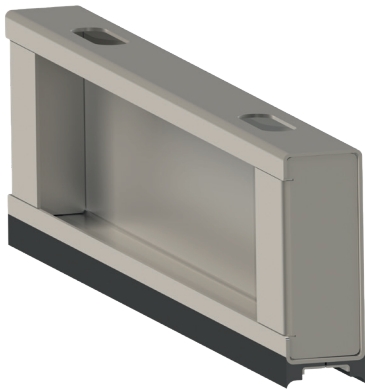
- **REVISION ASSISTANT**  
For the temporary closure of channels
- **VERY GOOD SEALING PERFORMANCE**  
The pressing device takes care of the correct pressing of the boards into the seals
- **PERFECT CORROSION PROTECTION**  
All welded stainless steel parts from our own pickling plant

## Stainless steel version

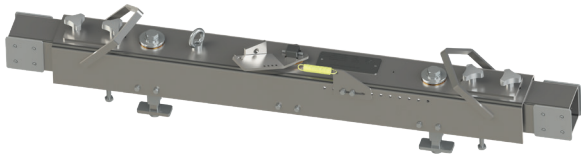
### Profil



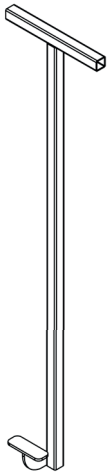
90 mm x 250 mm



### Extraction tools



Semi-automatic extraction tool, stainless steel



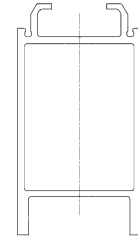
Extraction key stainless steel

## Aluminum version

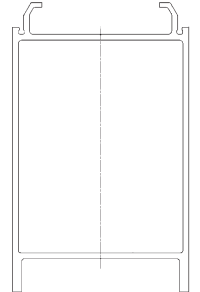
### Profil



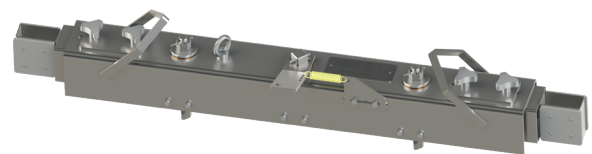
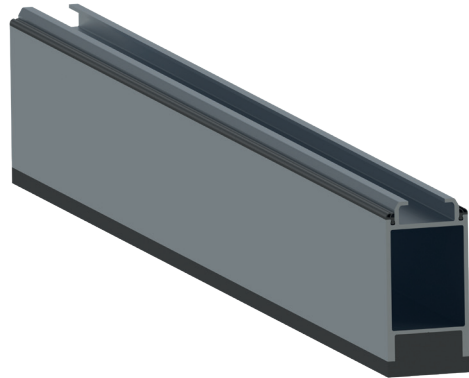
50 mm x 300 mm



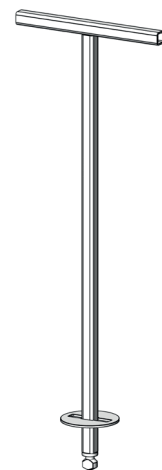
90 mm x 150 mm



150 mm x 225 mm



Semi-automatic extraction tool, aluminum



Extraction key aluminum

### SPECIAL FEATURES

- **PRESSING DEVICE**

Ensures correct pressing of the logs into the seals and is included in the scope of delivery

