



Universal joint

Modular Actuation System MAS

Connections freely combinable

- Parallel square (20, 25 und 30 mm)
- Conical square (17, 19, 24 und 27 mm)
- Round shaft with fitting key (16, 20 und 30 mm)

Torque

- maximum 250 Nm at 30° deflection

Weight

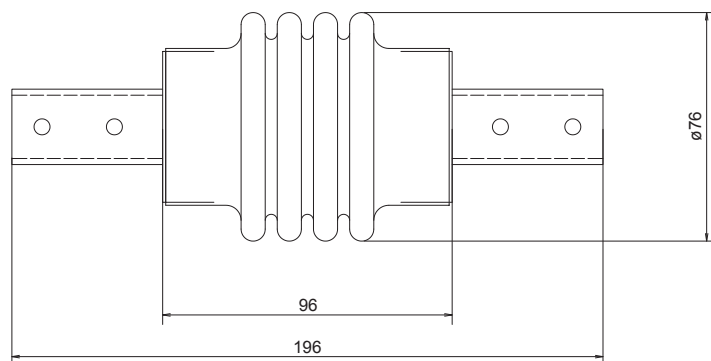
- 1,4 kg

Material

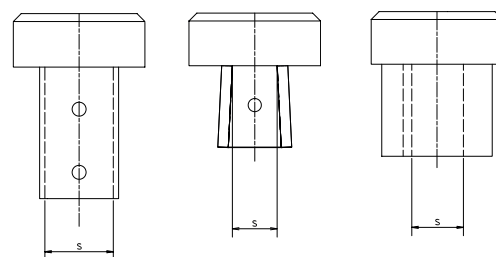
- Stainless steel 1.4301 (304) / 1.4404 (316L)



Universal joint with gaiter



Dimensional drawing universal joint



Parallel square

Conical square

Round shaft with

fitting key



YOUR ADVANTAGES

- **MAINTENANCE FREE**
Always ready for use, for protection against soiling with folding bar equipped
- **FOR OPTIMAL ADAPTATION**
of actuation rods depending on the installation situation
- **FLEXIBLE AREAS OF APPLICATION**
The waterproof design allows use in drinking water and waste water areas