



Stem bearing for actuators

made of stainless steel and bronze

Stem bearing

- Absorbs pressure power
- For rising and non-rising spindle
- With flange connection F10/F14/F16 acc. EN ISO 5210 or DIN 3210

Material body

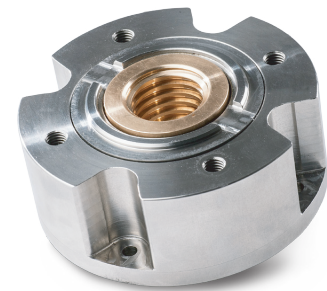
- Stainless steel 1.4301 (304) / 1.4404 (316L)

Material bearing brush

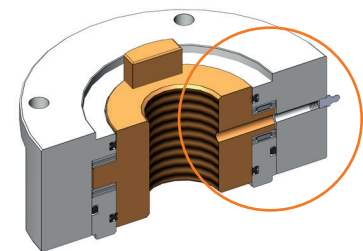
- Seawater resistant bronze GC-CuSn 12

Scope of delivery

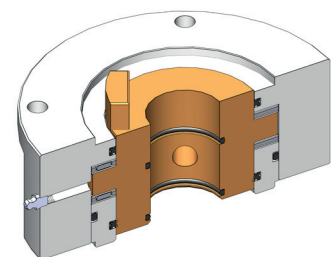
- In the version for rising spindle, the grease nipple for regular lubrication of the bearing already included



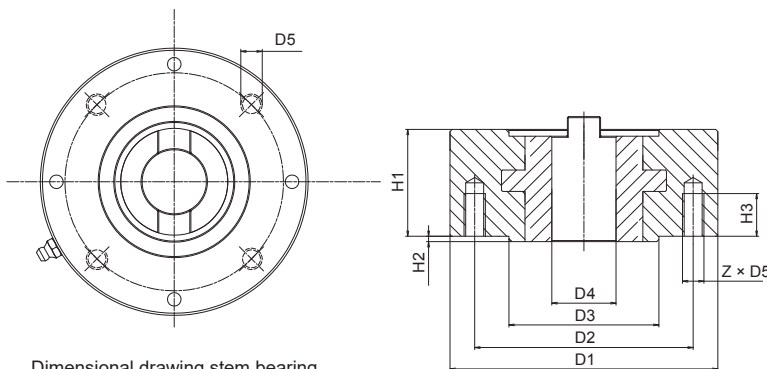
Design for rising spindle



Version for rising spindle - grease nipple already included



Version for non-rising spindle



Dimensional drawing stem bearing

	F10	F14	F16
F max. kN (mm)	70	160	250
D1	125	175	210
D2	102	140	165
D3	70	100	130
D4 max.	40	58	75
D5	M10	M16	M20
H1	50	60	80
H2	2,5	4	4,5
H3	20	25	30
Z	4	4	4
Weight (kg)	4,1	9,1	17,4

YOUR ADVANTAGES

- **PERFECT COMPONENT**
Axial bearing for mechanical connection of penstocks spindle and e-actuator

