



Stop logs

made of stainless steel or aluminium

STOP LOG LOCK FOR BLOCKING BUILDING OPENINGS ON 3 SIDES

Logs

- Stop log with intermediate seal, straight channel profile in the bottom
- Design of the material thickness of frame and log according to static requirements - including 2 pressure devices for each frame (at least 100 mm above the last log)
- Including officially approved fastening material made of stainless steel

Tightness class

- Leakage rate to DIN EN 19569, Part 4, Table 1:
- Pressure on the front or back side $0,3$ to $1,0 \text{ l} \cdot \text{s}^{-1} \cdot \text{m}^{-1}$ (Tightness class 1)

Frame

- 3-sided, u-shaped frame with already mounted seals with base plate
- Alternatively: frame without base plate for direct sealing on the channel base

Material logs

- Stainless steel 1.4301 (304) / 1.4404 (316L) / 1.4410 (507) / 1.4462 (318LN)
aluminium EN AW-6063 T6 SQ

Material frame

- Stainless steel 1.4301 (304) / 1.4404 (316L) / 1.4410 (507) / 1.4462 (318LN)

Dimensions stainless steel profiles

- W x H 90 mm x 150 mm (Minimum height)
- Other heights according to individual production on request

Dimensions aluminium profiles

- W x H 50 mm x 300 mm
- W x H 90 mm x 150 mm or with additional reinforcement according to static requirements
- W x H 150 mm x 225 mm

Material sealing

- EPDM / EPDM with WRAS approval / NBR

Frame fastenings

- Concreting in a building recess
- Dowels in a channel
- Dowels in front of a building opening

Mounting

- Pressing device

Optional accessories

- Manual or semi-automatic extraction tool
- Cover plate for guide rails - U-profiles can be closed flush with the wall
- Theft protection
- Stop log storage systems (see corresponding BÜSCH data sheet)



Stop log for concreting in front of a building opening



Stop logs 4200 x 2600 mm „Wöhrder See“, Germany



YOUR ADVANTAGES

- **REVISION ASSISTANT**
For the temporary closure of channels

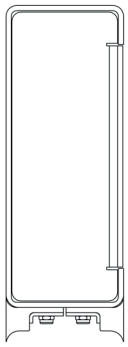
- **VERY GOOD SEALING PERFORMANCE**

The pressing device takes care of the correct pressing of the boards into the seals

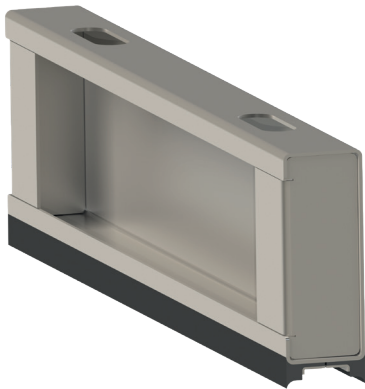
- **PERFECT CORROSION PROTECTION**
All welded stainless steel parts from our own pickling plant

Stainless steel version

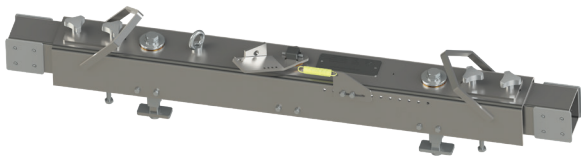
Profil



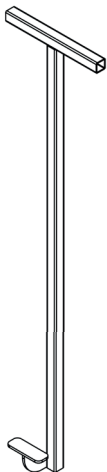
90 mm x 150 mm



Extraction tools



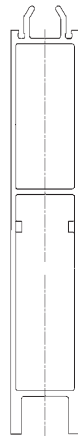
Semi-automatic extraction tool, stainless steel



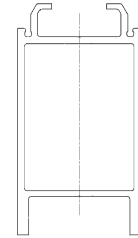
Extraction key stainless steel

Aluminum version

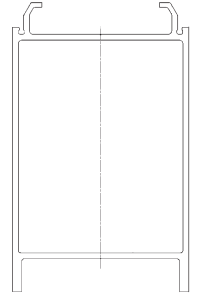
Profil



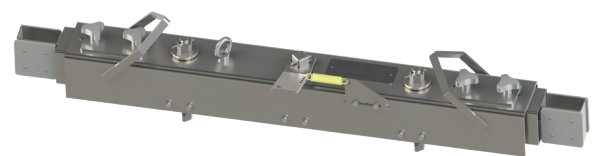
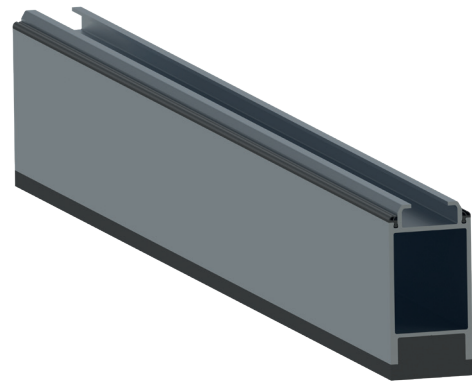
50 mm x 300 mm



90 mm x 150 mm



150 mm x 225 mm



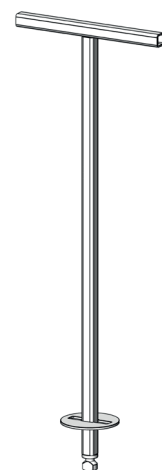
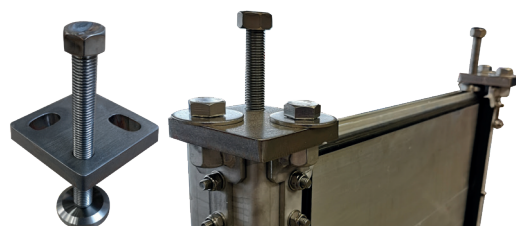
Semi-automatic extraction tool, aluminum



SPECIAL FEATURES

- **PRESSING DEVICE**

Ensures correct pressing of the logs into the seals and is included in the scope of delivery



Extraction key aluminium