



# BÜSCH

## Installation aid to protect the bottom for XL4 semicircular penstocks larger DN 1200

made of stainless steel

i

### YOUR ADVANTAGES

- **PROTECTION OF THE PENSTOCK**  
Prevents bending of the round bottom during the building process from the delivery pallet or the transport vehicle
- **SIMPLE & SAFE**  
Elaborate unloading with four attachment points is no longer necessary
- **FAST & UNCOMPLICATED**  
Installation aid is supplied pre-assembled and protrudes above the bottom area to protect the penstock

### Building process

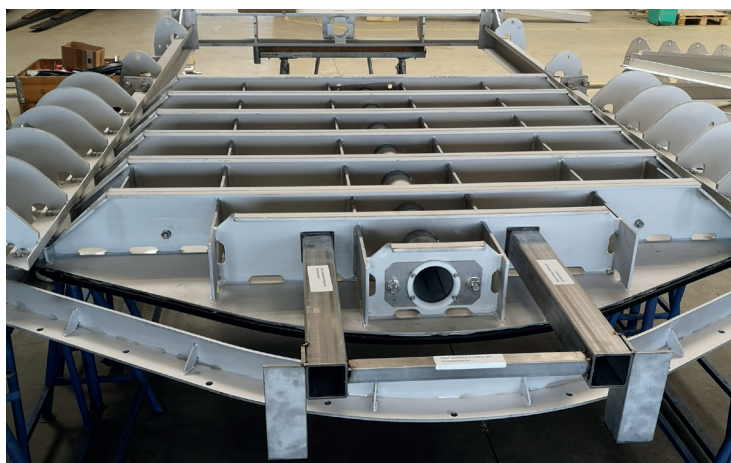
- Installation aid is preassembled as standard
- Attach the penstock for the building process to the crane
- Lift the penstock over the pallet or transport vehicle and set it up
- As soon as the penstock hangs freely suspended on the hook, dismantle the installation aid



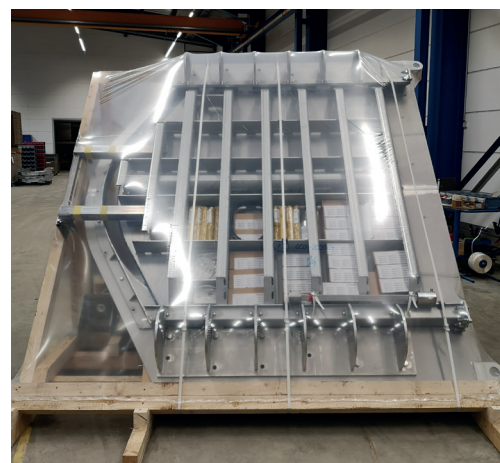
Dismantling the installation aid  
after the building process



XL4 semicircular DN 1600 with preassembled installation aid



XL4 semicircular DN 2000 with preassembled installation aid ex works



XL4 semicircular DN 2000 with preassembled installation aid on shipping pallet

2023-05-09-en